

WildSnap IR X12

INSTRUCTION MANUAL

GB GAME AND SURVEILLANCE CAMERA

WildSnap IR X12



DÖRR WildSnap IR X12 Game and Surveillance Camera

IMPORTANT NOTES

Before starting to use the camera, please note the following safety hints:

- Your camera is fitted with a weatherproof housing according to protection class IP54 (dust and splash waterproof). Therefore the camera can be used outdoors. Nevertheless protect the camera from extreme weather conditions and direct sunlight. The recommended storage and operation temperature is -10 to 40 °C.
- Make sure to use fresh batteries of the same type and brand only.
- Use a soft cleaning tissue to clean the camera lens. Avoid touching the lens with your fingers.
- Remove dust and spots at the camera housing with a soft and slightly damp tissue.
- Store the camera at a dry and cool place when not in use.
- Remove the batteries in case you do not use the camera for a longer period.
- Do not drop the camera onto a hard surface.
- Do not open the camera housing (except protective cover and battery cover). The warranty will become void. In case of a defect, send the camera to an authorized service agent.
- Up to date manuals can be found at www.download.doerrfoto.info/manuals/

NOTE The camera is high precision electrical device. Do not attempt to repair it by yourself.

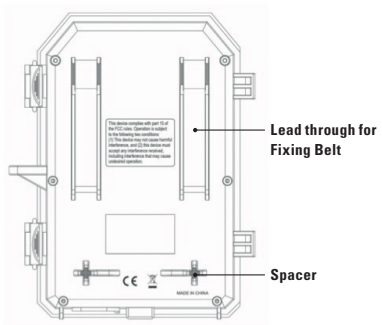
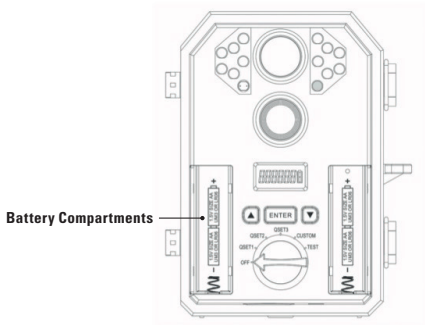
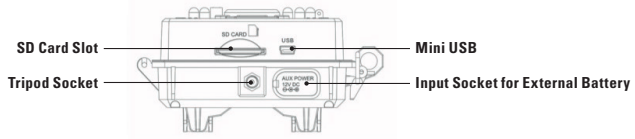
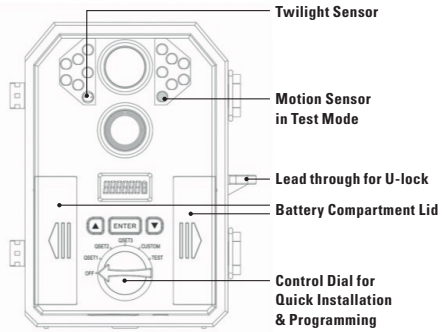
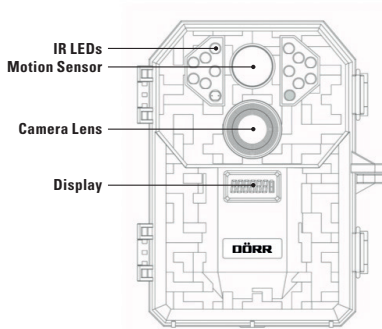
When opening the housing, there is a risk of high voltage and other kind of risks.

NOTE Make sure to respect the regulations of privacy protection!

INDEX

Camera Description & Overview	3
Quick Start Guide	4
Choose one of the two available Energy Sources	
Insertion of the SD/SDHC Memory Card	
Camera Installation	
Camera Activation	
Camera Programming	4
Memory Card (SD/SDHC)	6
Installation	
SD Card Capacity Overview	6
Exchange of Batteries	6
Viewing Images and Deleting Images	6
Specifications	7
European Conformity Declaration Notes	8

CAMERA DESCRIPTION AND OVERVIEW



QUICK START GUIDE

Choose one of the two available Energy Sources

Insert 4 AA batteries in each of the 2 battery compartments making sure to respect the correct polarity or connect the camera to a 12 V battery using the socket DC 12 V at the camera bottom. AA batteries and 12 V battery are not included in the scope of delivery.

Insertion of the SD/SDHC Memory Card

Insert the SD memory card into the card slot at the camera bottom. Respect the symbol for the direction of insertion. Make sure to use a SD memory card with a capacity of minimum 2 GB, max 32 GB and speed of minimum Class 10.

Camera Installation

Mount the camera on a tree or pole or any other suitable object using the supplied belt or. Do not fix the belt finally at this stage. Make sure that the camera won't move with the wind. The optimum distance to the object is between 3 to 12 meters. Theoretically, larger distances are also possible, however with less reliability and a larger picture frame. We recommend to take a few test shots and to finally fix the camera afterwards – read more in chapter camera programming.

Camera Activation

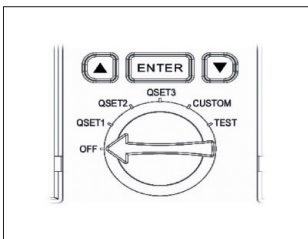
Use the rotary dial to select the desired setting. For details read the chapter camera programming.

Position	Default Settings
QSET1	Resolution 6 MP – 3 pictures – 30 s delay
QSET2	Resolution 6 MP – 1 picture – 30 s delay
QSET3	10 s Video VGA – 30 s delay
CUSTOM	Resolution 4 MP – 1 picture – 5 s delay (default)

Definition of delay: It is a predetermined pause during which the motion sensor is not active and no images will be taken.

Once the dial is on the desired setting, the camera will be ready to shoot after 30 s.

CAMERA PROGRAMMING



Your camera offers 6 operation modes:

OFF / QSET1 / QSET2 / QSET3 / CUSTOM / TEST

The selected setting becomes active immediately after use of the rotary dial.

OFF:

This setting switches the camera off.

QSET1: Quick-Set 1 Quick-Set Program 1

With this setting the screen shows the following information:

1. *dLY 30* – Delay. The camera counts down from 30 to 0 s.
2. *rdy* – Ready. The camera is now in operation and ready to take pictures.
3. The display also shows a chart indicating the battery status.
4. In case the camera does not notice any movements, the display will switch off after 10 s.

In this mode the camera takes pictures with a resolution of 6 MP. With every activation of the motion sensor, the camera takes 3 continuous shots. Then the motion sensor takes a 30 s pause during which no pictures are taken.

QSET2: Quick-Set 2 Quick-Set Program 2 – Same display information as with QSET1

In this mode the camera takes pictures with a resolution of 6 MP. With every activation of the motion sensor, the camera takes 1 picture. Then the motion sensor takes a 30 s pause during which no pictures are taken.

QSET3: Quick Set 3 Quick-Set Program 3 – Same display information as with QSET1

In this mode the camera takes a 10 s video sequence with VGA resolution. Then the motion sensor takes a 30 s pause during which no pictures are taken.

CUSTOM:

In this mode, you can program the camera according to your requirements. There are also default settings – see chapter camera activation. When you select this mode, the camera will count down from 30 to 0 seconds. Then the pre-programming becomes active. The display shows "rdy" for approx. 1 minute. Use the up and down keys during the countdown to reach the programming mode.

Menu navigation in programing mode: Pressing ENTER confirms your choice and opens a submenu. Use the up and down keys to select the desired functions and values as for example date and time.

Example in menu item "Date":

- Select customs mode using the rotary dial. During countdown press the up key. You have reached the date setting mode. Use the up and down keys to set the correct day, confirm by pressing enter. The cursor now moves to the months. Use the up and down keys again to select the value and press ENTER to confirm you choice.

The following settings can be changed using the same navigation tools UP, DOWN, ENTER:

- *DATE* **Date**
- *TIME* **Time**
- *MODE* **Camera Mode**
Photo or Video
- *RES* **Resolution**
Photo mode: Lo (2 MP), Hi (6 MP), Med (4 MP); Video mode: only VGA 640 x 480 available.
- *DELAY* **Delay**
Define the pause duration for the motion sensor. Select between 5/10/15/30/60/120 seconds.
- *BURST* **Number of Pictures**
Select the number of pictures to be taken per motion detection. The camera can take up to 6 images each time.
(Does not apply in video mode).
- *VIDEO* **Video**
Select from a sequence of 5/15/30 s.

- **RESET Reset**

Camera settings are reset to the factory's default values.

- **DELETE Delete**

Deletes all data on the SC card. Check first if the images and films have been saved on another media before you delete.

- **QUIT Quit**

Quits the programming mode. After a countdown of 30 s the camera will be ready to shoot

Test Mode:

Select position test with the rotary dial. In this mode you can check the motion sensor's range. Move in front of the camera forward, backward, to the left and to the right. As long as you move within the sensor's range a green LED will blink at the right top window at the camera front. Once you move out of the range, the green LED stops blinking. Whenever necessary, redirect the camera.

MEMORY CARD (SD/SDHC)

Installation

Open the camera's protective housing. The SD card slot is located at the camera bottom. Insert the SD memory card as shown on the sketch at the housing. Make sure to format the memory card and that the card is not write-protected. The display will indicate a missing or false SD memory card.

The camera supports SD/SDHC cards with a capacity of 2GB to 32GB. For best results we recommend the use LEXAR brand cards with a speed of minimum "Class 10".

SD CARD CAPACITY OVERVIEW

Chart shows number of pictures or video sequences depending on resolution and SD card capacity.

	6 MP	4 MP	2 MP	Video 5 s	Video 10 s	Video 15 s	Video 30 s
2 GB SD C	1462	2048	3187	1024	512	310	170
4 GB SDHC	2924	4096	6374	2048	1024	620	340
8 GB SDHC	5848	8192	12748	4096	2048	1240	680
16 GB SDHC	11696	16384	25496	8192	4096	2480	1360
32 GB SDHC	23392	32768	50992	16384	8192	4960	2720

EXCHANGE OF BATTERIES

Insert 4 AA batteries in each of the 2 battery compartments making sure to respect the correct polarity. We recommend to use fresh batteries of the same type and brand only.

VIEWING IMAGES AND DELETING IMAGES

There are two ways to view the images and to delete them.

External Card Reader Remove the SD card from your camera and use an external card reader to view the images on your computer. You can now copy and paste them or delete them.

Viewing from Camera Connect the camera to your computer using a USB cable. Your computer will recognize the SD card as a removable medium. Now you can view, copy and paste or delete your images.

SPECIFICATIONS

Number and Type of LEDs	12 high performance infrared LEDs
Infrared Flash	IR 840 nm
Trigger Time	approx. 1,5 s
Resolution of Camera Sensor	2 MP Sensor of latest generation/interpolated up to 6 MP
Video Sequence Length	5/10/15/30 s at choice
Video Format	AVI/Codec, MJPG 30 FPS
Number of Photos per Motion Detection	1 to 6 pictures (Burst) selectable
Motion Sensor	45° angle, distance approx. 18 m
Flash Range	approx. 18 m
Sensor Delay	5/10/15/30/60/120 s at choice
Time Stamp	Date/time
Continuous Shooting Mode / Interval Mode	not available
Housing Protection Class	IP 54
Energy Source	8 x 1,5 V Mignon AA batteries or 12 V external battery (not included)
Memory Card	SD/SDHC2 GB up to 32 GB (not included)

EUROPEAN CONFORMITY DECLARATION NOTES



WEEE INFORMATION

The Waste Electrical and Electronic Equipment Directive (WEEE Directive) is the European community directive on waste electrical and electronic equipment, which became European law in February 2003. The main purpose of this directive is to prevent electronic waste. Recycling and other forms of waste recovery should be encouraged to reduce waste. The below symbol (trash can) on the product and on the packing means that used electrical and electronic products should not be disposed of with general household waste. It is your responsibility to dispose of all your electronic or electrical waste at designated collection points. Disposing of this product correctly will help to save valuable resources and it is a significant contribution to protect our environment as well as human health. For more information about the correct disposal of electrical and electronic equipment, recycling and collection points please contact your local authorities, waste management companies, your retailer or the manufacturer of this device.

ROHS CONFORMITY

This product is compliant with the European directive 2011/65/EU of January 03, 2013 for the restriction of use of certain hazardous substances in electrical and electronic equipment (RoHS) and its amendments.



CE MARKING

The CE marking complies with the European directives.

You can download the relative EU declaration of conformity with following link:

<http://www.doerrfoto.de/info/EG-Konformitätserklärungen>